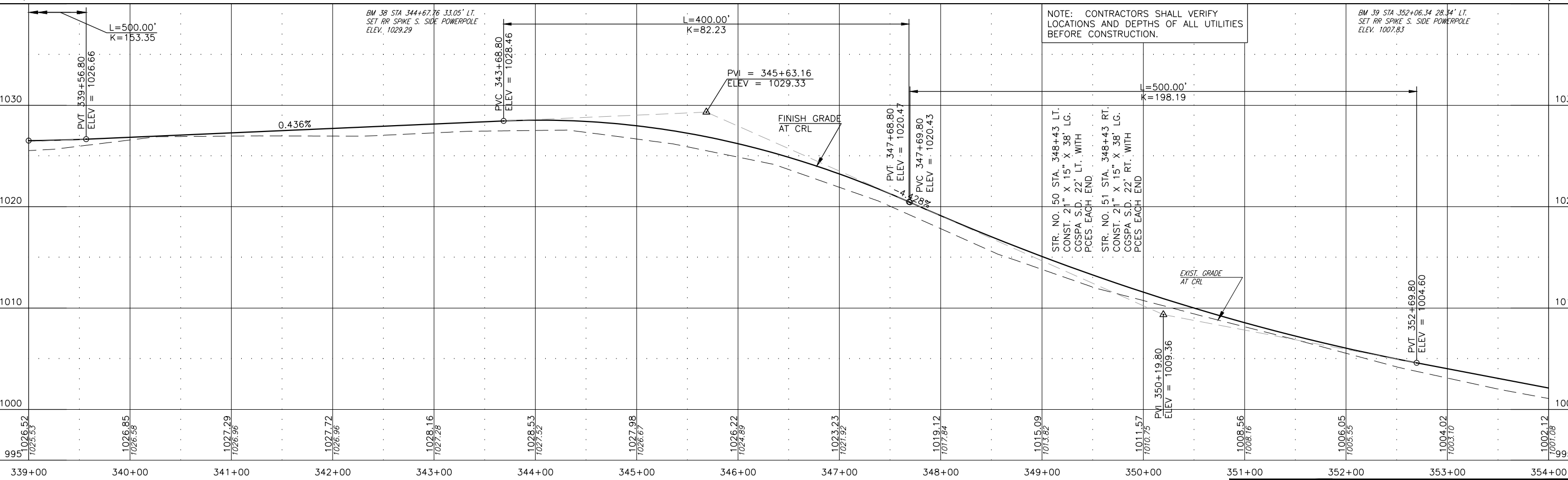
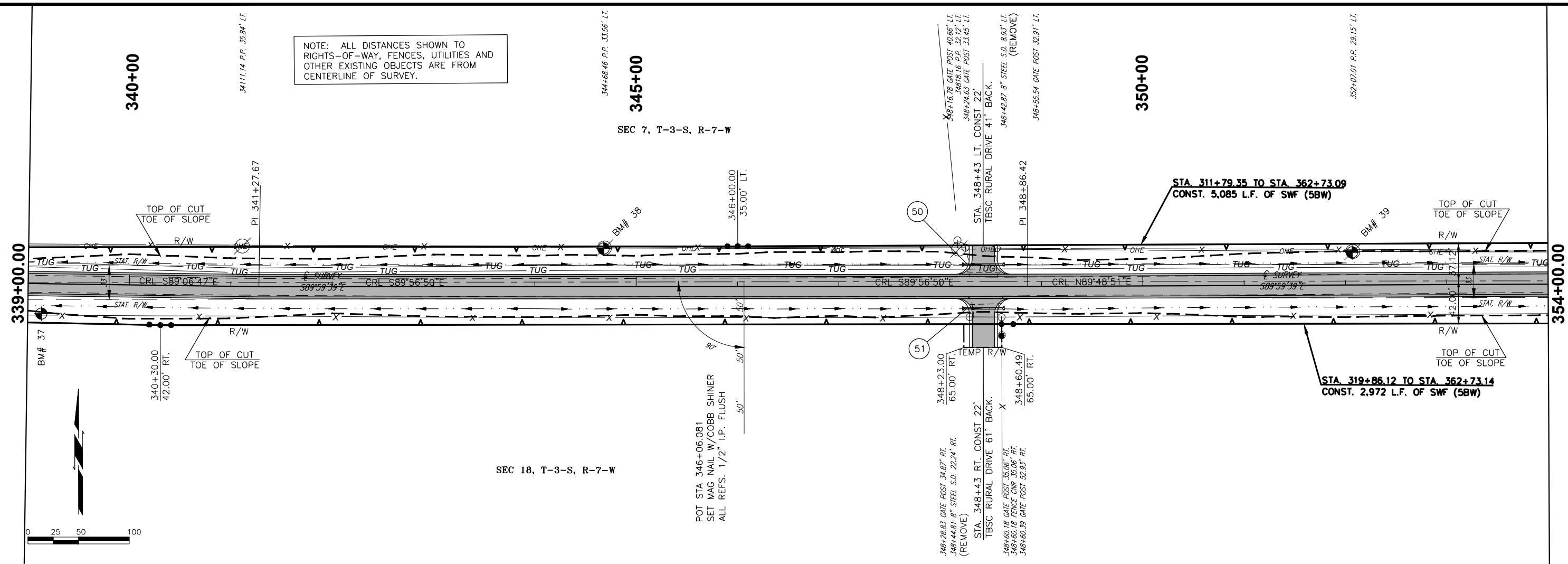


PLOT DATE: August 8, 2017, DRAWING NAME: N:\OCC\TRANSPORTATION\COUNTY\PRODUCTION\STEPHENS\12010.DWG-187\STEPHENS\PROJECT DRAWINGS\PLAN AND PROFILE 187.DWG

NOTE: ALL DISTANCES SHOWN TO RIGHTS-OF-WAY, FENCES, UTILITIES AND OTHER EXISTING OBJECTS ARE FROM CENTERLINE OF SURVEY.



NOTE: CONTRACTORS SHALL VERIFY LOCATIONS AND DEPTHS OF ALL UTILITIES BEFORE CONSTRUCTION.

STR. NO. 50 STA. 348+43 LT. CONST. 21" X 15" X 38' LG. CGSPA S.D. 22' LT. WITH PCES, EACH END.
 STR. NO. 51 STA. 348+43 RT. CONST. 21" X 15" X 38' LG. CGSPA S.D. 22' RT. WITH PCES, EACH END